



Conservation Priority Setting in the Green Corridor & Central Truong Son

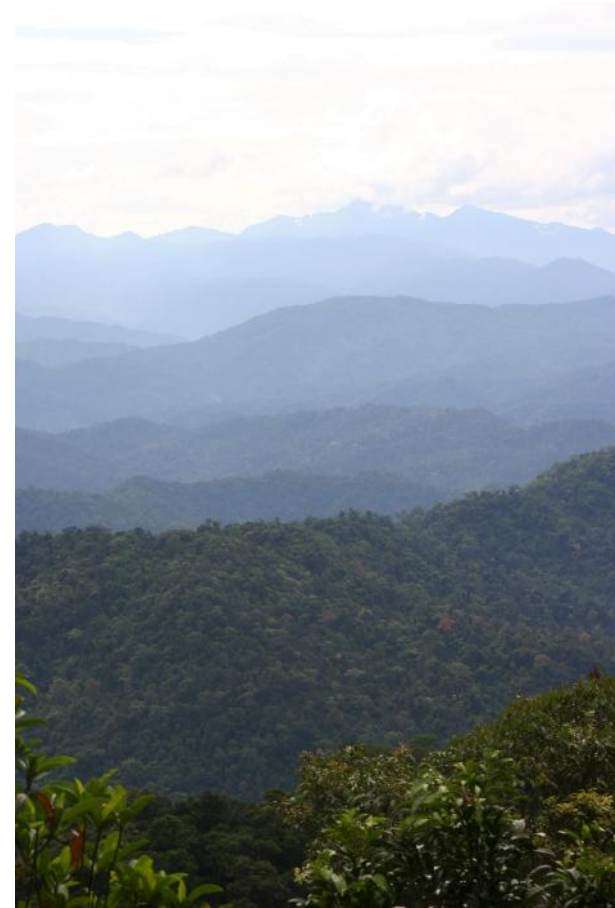
Chris Dickinson





Objective

- Introduction to Central Truong Son
- Identified conservation, species and landscape foci
- Rationale for Green Corridor Project

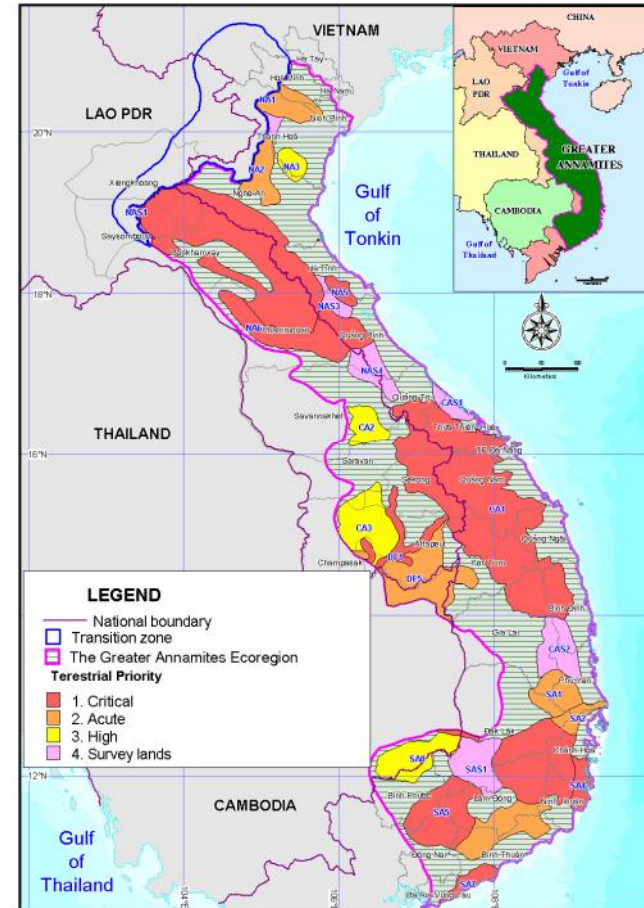




Greater Annamites

- Greater Annamites Ecoregion – highest global 200 conservation priority
- CTS Biological Vision recognizing the importance of the landscape

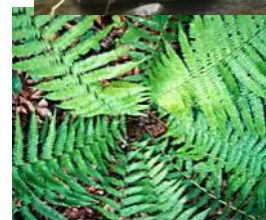
The Greater Annamites (Truong Son - Sayphou Louang) Ecoregion





Importance of the Central Truong Son

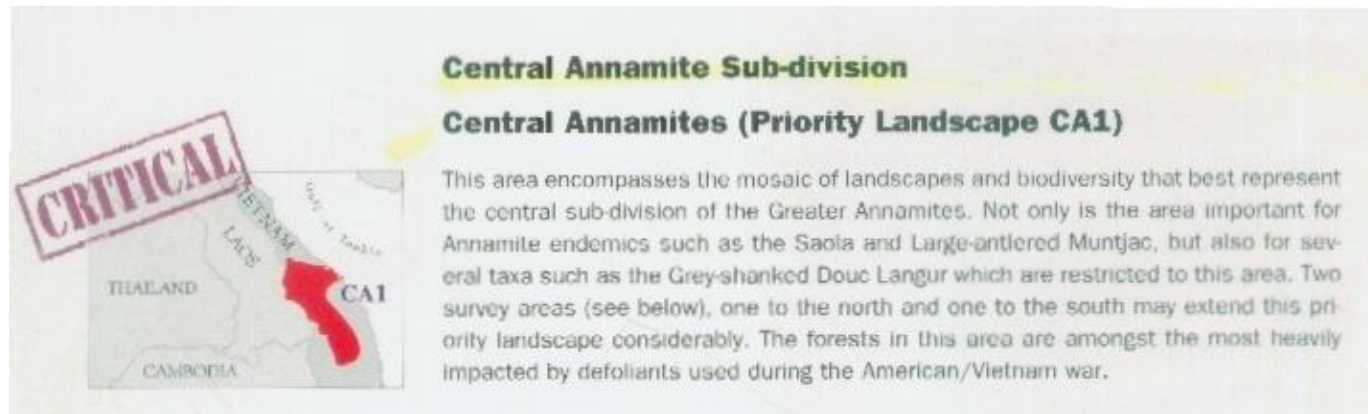
- Outstanding biodiversity value
- High degree of threat
- Socio-economic importance
- Cultural diversity
- A centre-pin for conservation of the wider GTS landscape





CTS landscape prioritization (2003)

- To identify most important areas to manage, protect and restore a prioritization process conducted in CTS landscape





Conservation, species and landscape foci

- **Habitats**

- Lowland forest (0-700m); especially 0-400m
- Lower and medium montane forest (700-1500m)
- Upper montane forest (>1500m)
- Rapids and headwaters
- Middle reaches of rivers

- **Species & Groups**

- Saola, doucs, Edwards pheasant
- All turtles; ranging mammals; all primates; lowland pheasants; commercial fish species (eels and catfish)
- Endemic fauna / flora (butterflies, plants, fish, birds, reptiles, amphibians, mammals)

- **Landscape**

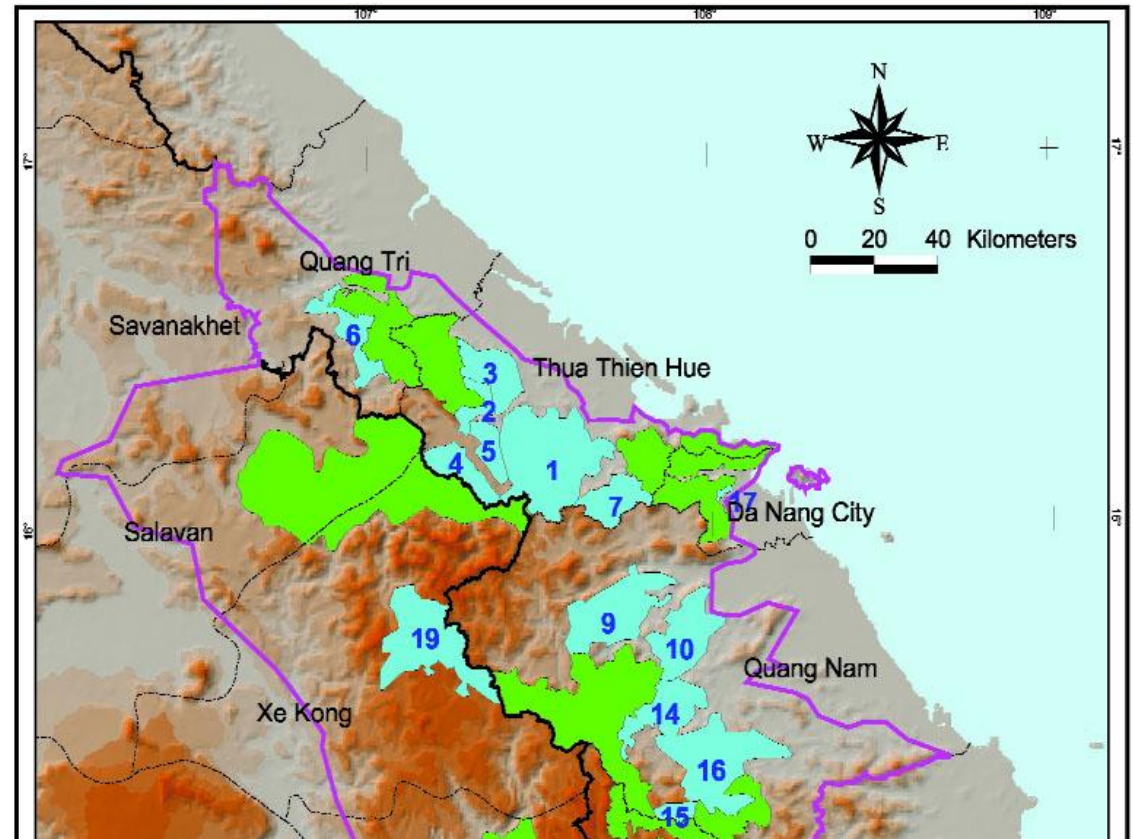
- Habitat corridors
- Core protected areas
- Ecological transitions





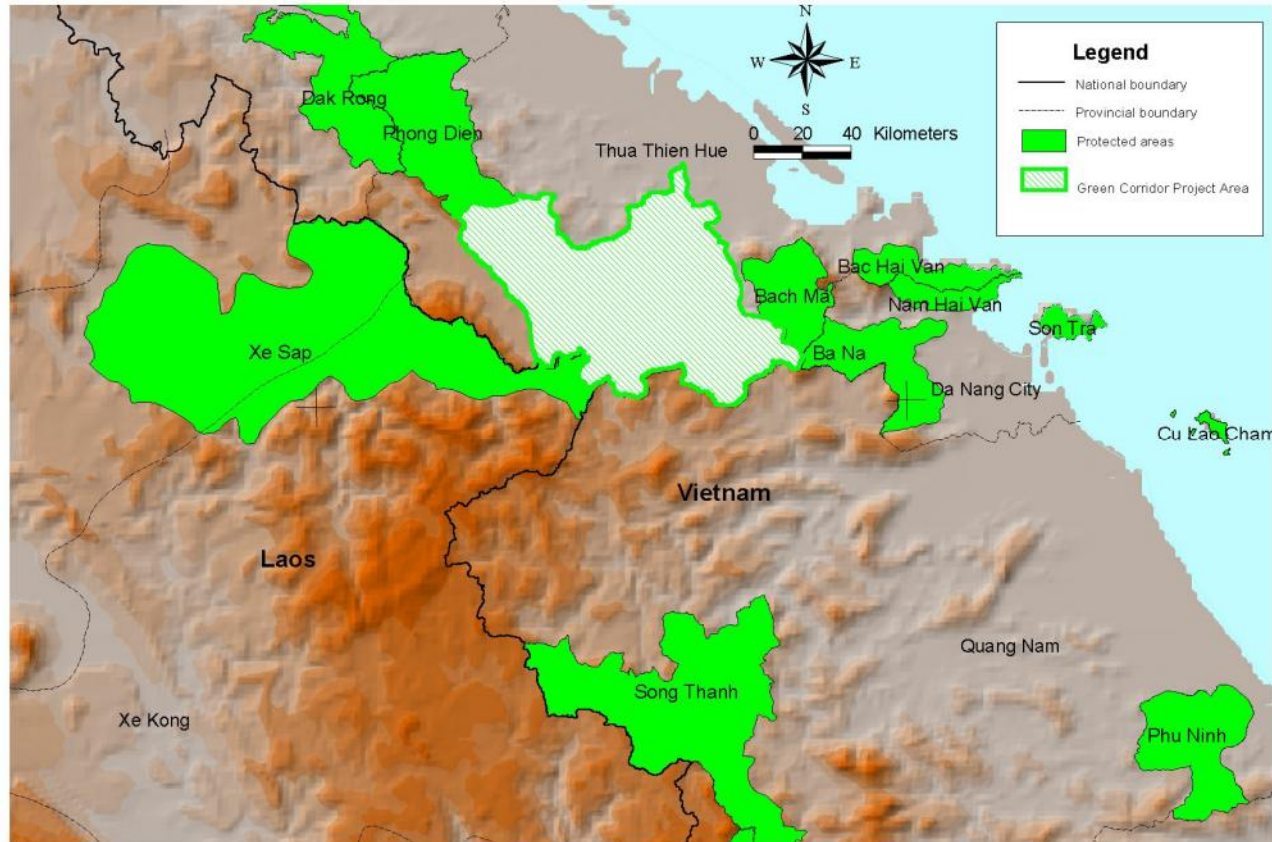
Results of CTS assessment

- **Critical areas:**
 - Xe Sap to TTH
 - Bach Ma – Hai Van
 - Phong Dien - Dak Rong
- **Priority Area:**
 - A Luoi to Nam Dong Green Corridor





Green Corridor in relation to other PA's



The Green Corridor and Relationship with Adjacent Protected Areas





Green Corridor Prioritization

- **Landscape Assessment to determine high value conservation forests within Green Corridor**
 1. Biodiversity surveys of flora and fauna (plants, fish, butterflies, mammals esp. primates, herps., birds)
 2. Forest mapping using SPOT 5
 3. GIS analysis – decision-making support tool





Workshop

- To disseminate information regarding biodiversity values
- To determine next steps for producing a conservation strategy and biological targets in Green Corridor area



