



Conservation Priority Setting in the Green Corridor & Central Truong Son

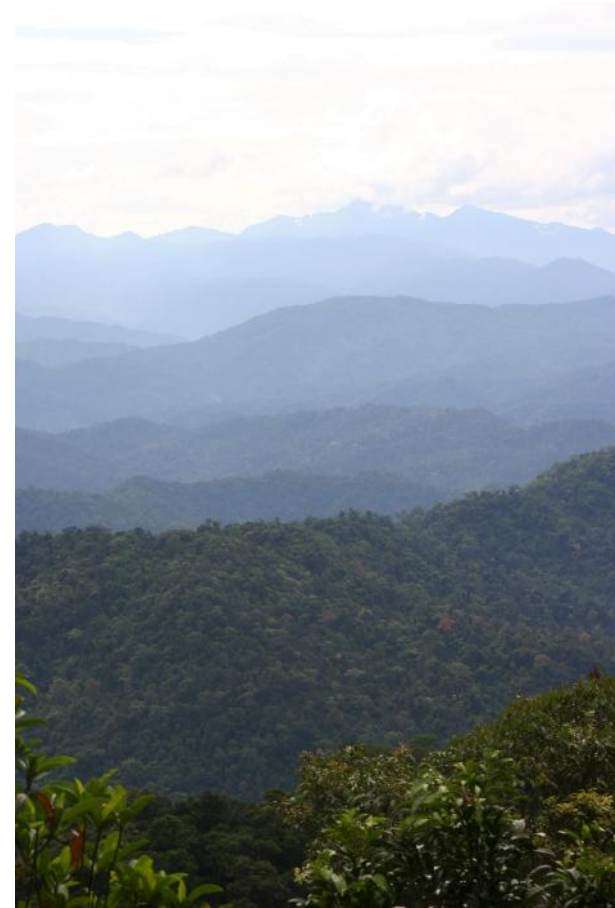
Chris Dickinson





Objective

- Introduction to Central Truong Son
- Identified conservation, species and landscape foci
- Rationale for Green Corridor Project

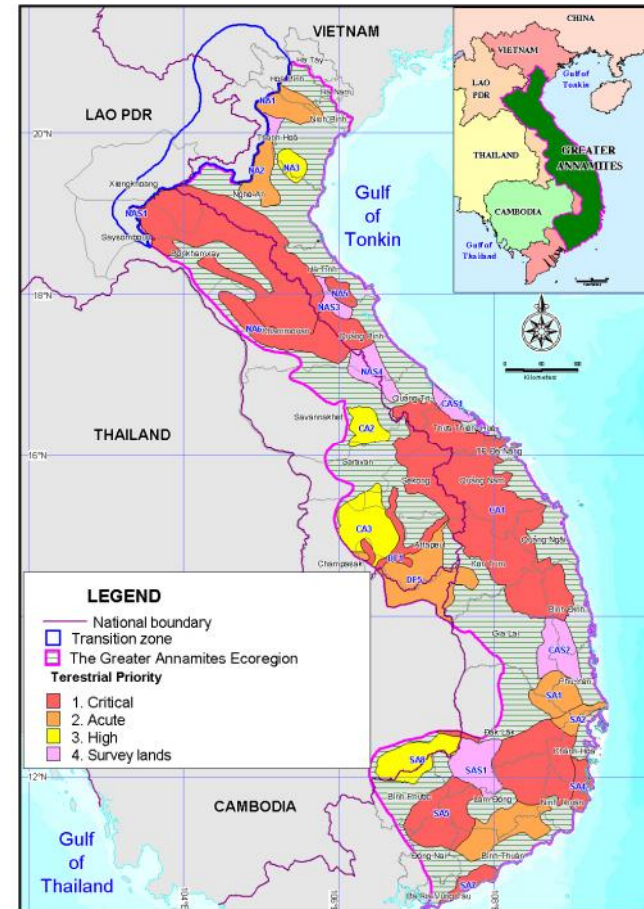




Greater Annamites

- Greater Annamites Ecoregion – highest global 200 conservation priority
- CTS Biological Vision recognizing the importance of the landscape

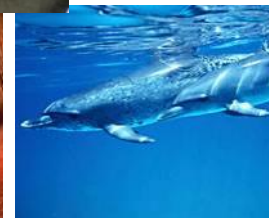
The Greater Annamites (Truong Son - Sayphou Louang) Ecoregion





Importance of the Central Truong Son

- Outstanding biodiversity value
- High degree of threat
- Socio-economic importance
- Cultural diversity
- A centre-pin for conservation of the wider GTS landscape






CTS landscape prioritization (2003)

- To identify most important areas to manage, protect and restore a prioritization process conducted in CTS landscape

Central Annamite Sub-division

Central Annamites (Priority Landscape CA1)

CRITICAL



This area encompasses the mosaic of landscapes and biodiversity that best represent the central sub-division of the Greater Annamites. Not only is the area important for Annamite endemics such as the Saola and Large-antlered Muntjac, but also for several taxa such as the Grey-shanked Douc Langur which are restricted to this area. Two survey areas (see below), one to the north and one to the south may extend this priority landscape considerably. The forests in this area are amongst the most heavily impacted by defoliants used during the American/Vietnam war.





Conservation, species and landscape foci

- **Habitats**

- Lowland forest (0-700m); especially 0-400m
- Lower and medium montane forest (700-1500m)
- Upper montane forest (>1500m)
- Rapids and headwaters
- Middle reaches of rivers

- **Species & Groups**

- Saola, doucs, Edwards pheasant
- All turtles; ranging mammals; all primates; lowland pheasants; commercial fish species (eels and catfish)
- Endemic fauna / flora (butterflies, plants, fish, birds, reptiles, amphibians, mammals)

- **Landscape**

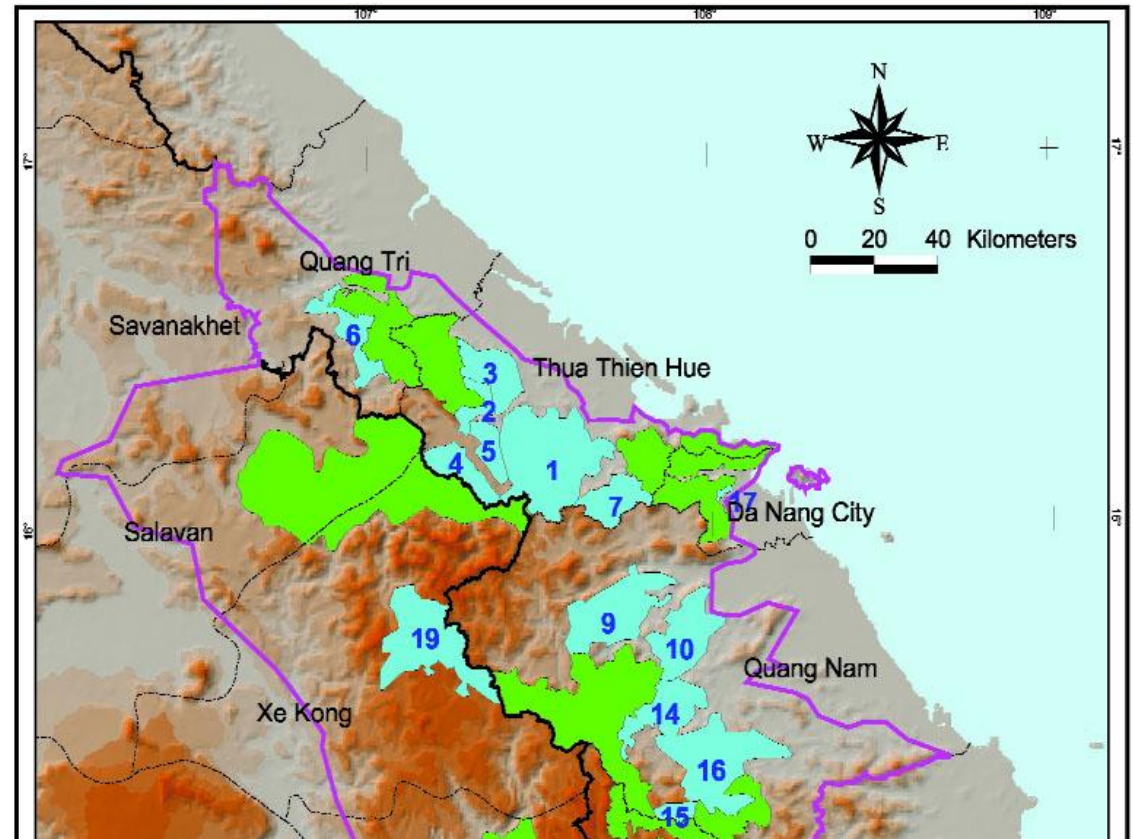
- Habitat corridors
- Core protected areas
- Ecological transitions





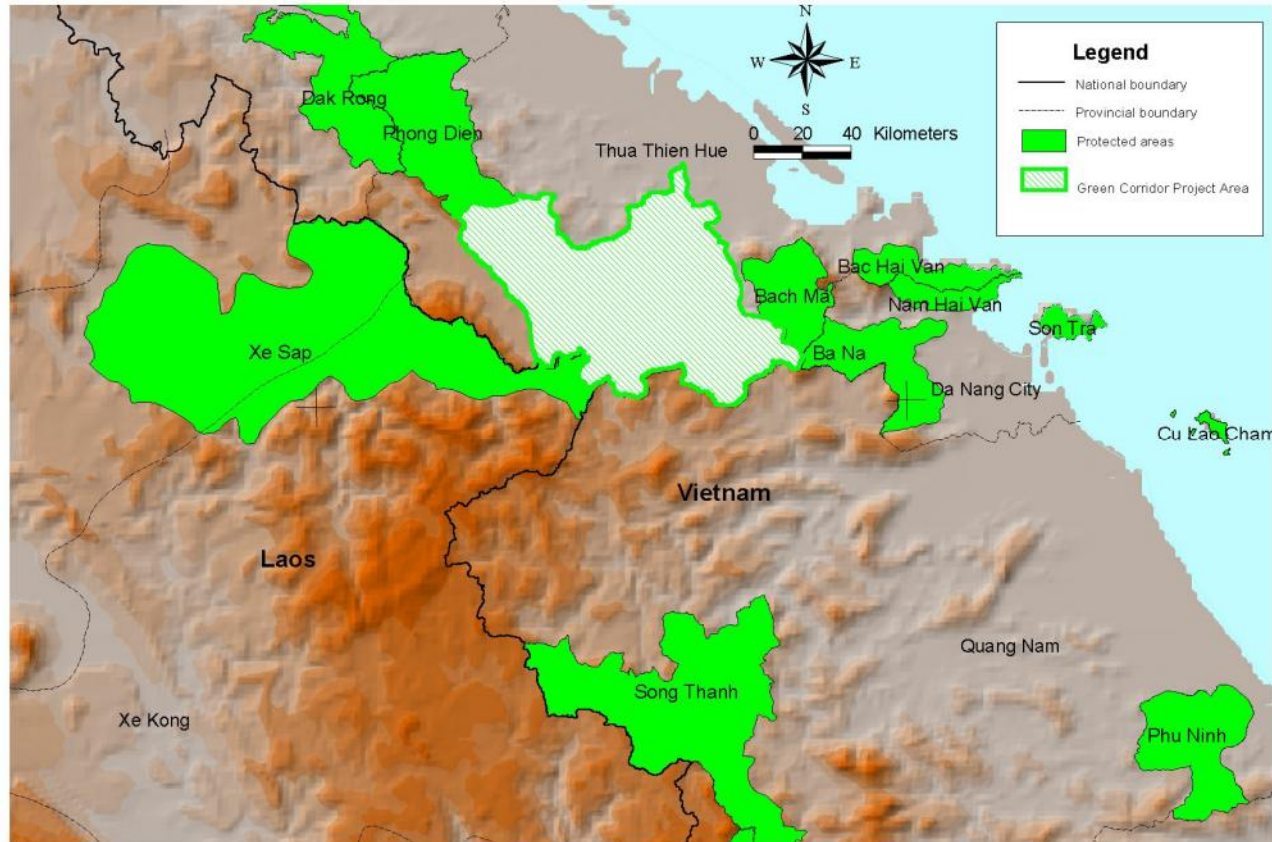
Results of CTS assessment

- **Critical areas:**
 - Xe Sap to TTH
 - Bach Ma – Hai Van
 - Phong Dien - Dak Rong
- **Priority Area:**
 - A Luoi to Nam Dong Green Corridor





Green Corridor in relation to other PA's



The Green Corridor and Relationship with Adjacent Protected Areas





Green Corridor Prioritization

- **Landscape Assessment to determine high value conservation forests within Green Corridor**
 1. Biodiversity surveys of flora and fauna (plants, fish, butterflies, mammals esp. primates, herps., birds)
 2. Forest mapping using SPOT 5
 3. GIS analysis – decision-making support tool





Workshop

- To disseminate information regarding biodiversity values
- To determine next steps for producing a conservation strategy and biological targets in Green Corridor area



